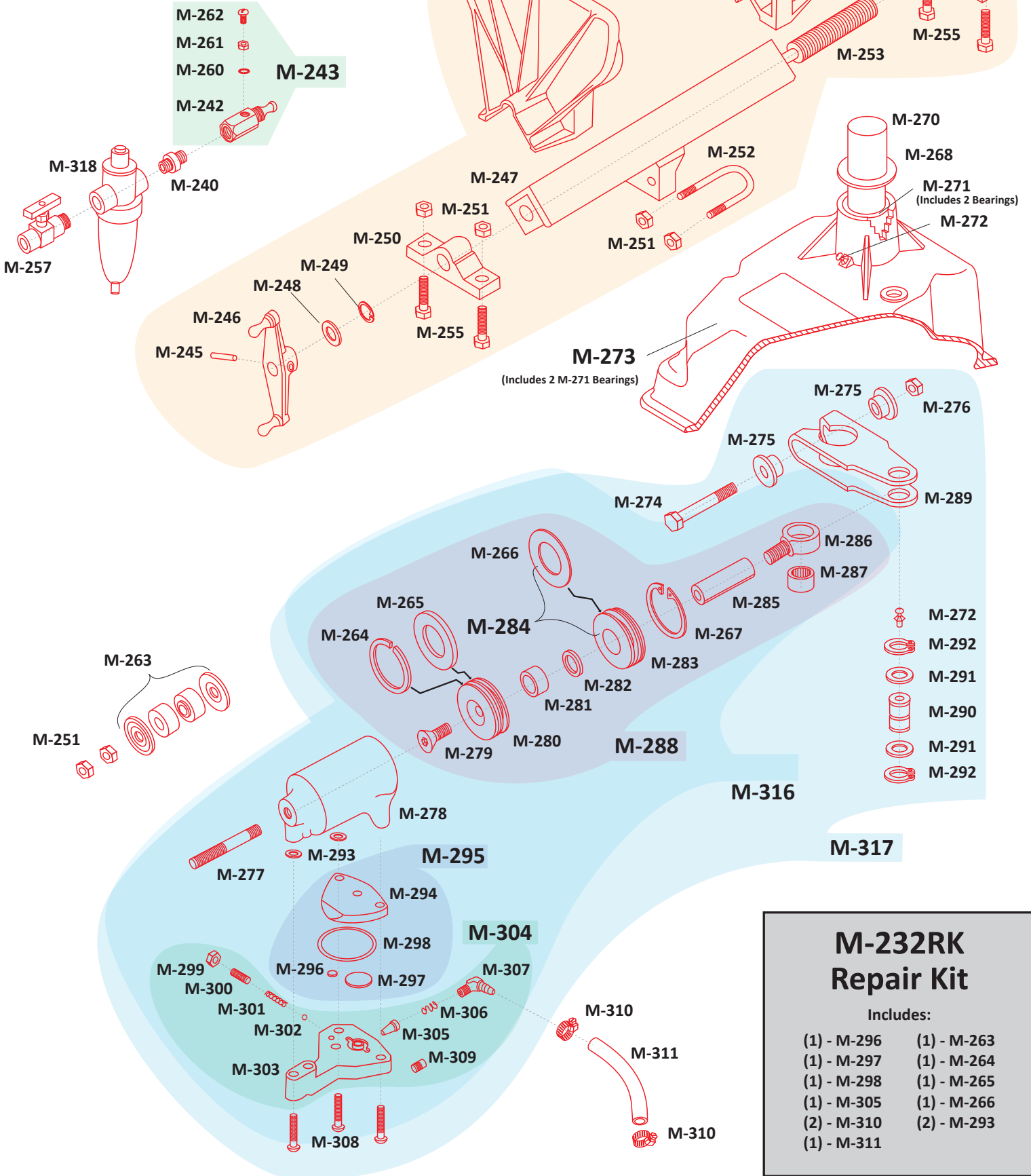


Cyclone™

Cyclone Paint Shaker

Dedoes PN# 0910 - PN# M-232



M-232RK Repair Kit

Includes:

(1) - M-296	(1) - M-263
(1) - M-297	(1) - M-264
(1) - M-298	(1) - M-265
(1) - M-305	(1) - M-266
(2) - M-310	(2) - M-293
(1) - M-311	

<u>Part No.</u>	<u>Description</u>
M-244	Jaw
M-245	Roll Pin
M-246	Handle
M-247	Clamp Frame Weld
M-248	Thrust Washer
M-249	Screw Retaining Ring
M-250	Clamp Nut Left Hand
M-251	3/8-16 Nut
M-252	U-Bolt
M-253	Clamp Screw
M-254	Clamp Nut Right Hand
M-255	Jaw Bolt
M-257	Control Valve
M-240	Brass Close Nipple
M-318	Lubricator Component
M-242	Inlet Fitting
M-243	Inlet Fitting Assembly
M-260	Adjustable Seal
M-261	Adjustable Jam Nut
M-262	Adjustable Screw
M-263	Shock Mount Bushing (Four Pieces)
M-264	Wear Ring
M-265	Piston O-Ring
M-266	Head O-Ring
M-267	Head Retaining Ring
M-268	Main Thrust Washer
M-270	Main Shaft
M-271	Main Bearing
M-272	Zerk Fitting
M-273	Housing Assembly with Bearings
M-274	Crank Arm bolt
M-275	Bolt Bushing
M-276	Crank Arm Nut
M-277	Cylinder Stud
M-278	Cylinder Body
M-279	Piston Screw
M-280	Piston
M-281	Rod Bearing
M-282	Rod Seal
M-283	Cylinder Head
M-284	Front Cylinder Head Assembly

<u>Part No.</u>	<u>Description</u>
M-285	Cylinder Rod
M-286	Rod End
M-287	Rod End Bearing
M-288	Cylinder Internal Assembly
M-289	Crank Arm
M-290	Crank Pin
M-291	Crank Thrust Washer
M-292	Crank Pin Retaining Ring
M-293	Transfer O-Ring
M-294	Inlet Valve Body
M-295	Inlet Valve Body Assembly
M-296	Check Valve Disc
M-297	Valve Disc
M-298	Valve Body O-Ring
M-299	Relief Jam Nut
M-300	Relief Set Screw
M-301	Relief Spring
M-302	Relief Ball
M-303	Outer Valve Body
M-304	Outer Valve Body Assembly
M-305	Inlet Filter
M-306	Filter Spring
M-307	Inlet Elbow
M-308	Valve Body Screw
M-309	Transfer Plug
M-310	Hose Clamp
M-311	Air Hose
M-312	Instruction Sheets
M-313	Housing Bolt
M-314	Drain Fitting
M-232RK	Repair Kit
M-231	Cyclone with Pedestal
M-232	Cyclone Paint Shaker
M-233	Cyclone Pedestal
M-315	Can Clamp Assembly
M-316	Cylinder Motor Assembly
M-317	Motor with Crank Arm