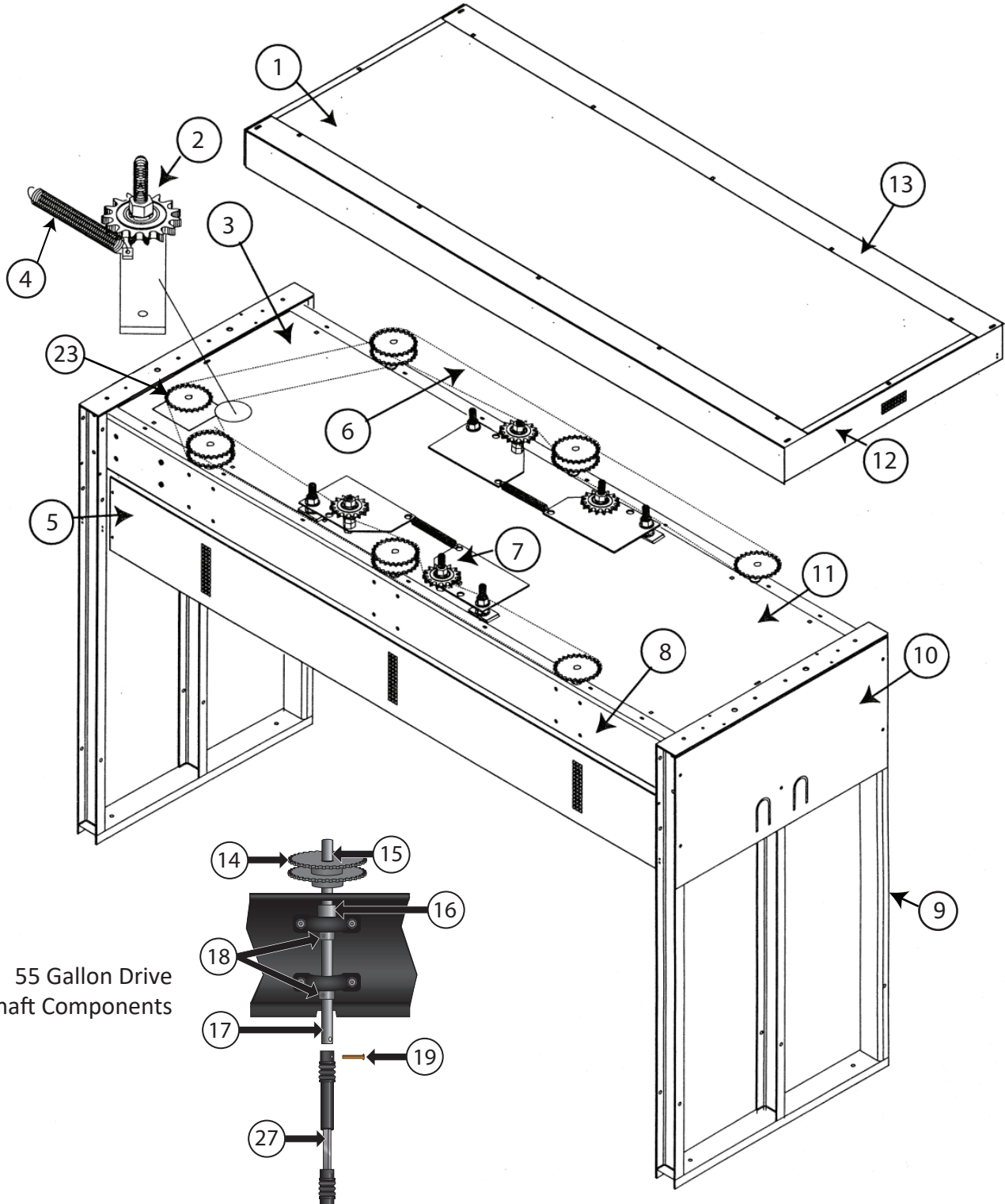




55 Gallon Mixing Machines
Part # 55/3, 55/6 and 55/6I

6 Place Back to Back 55 Gallon Drum Multi-Head Mixer
(Also available is a 3 Place 55 Gallon Drum Multi-Head Mixer and a 6 Place In-Line Mixer.)

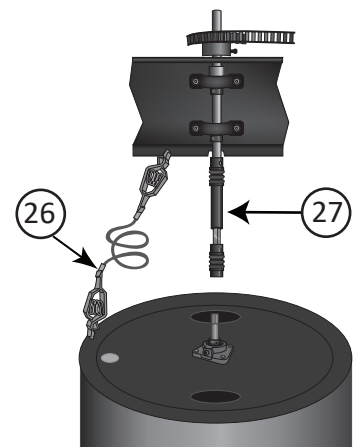
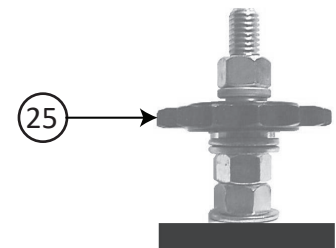
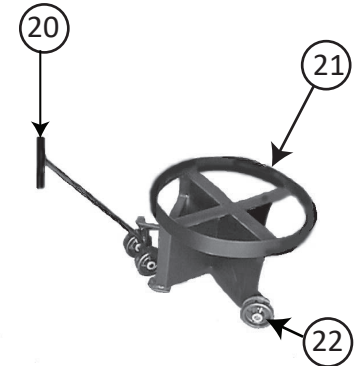


For technical support on our products or additional accessories, please call us at 248-624-7710 or visit : www.dedoes.com



55 Gallon Mixing Machines
Part # 55/3, 55/6 and 55/6l

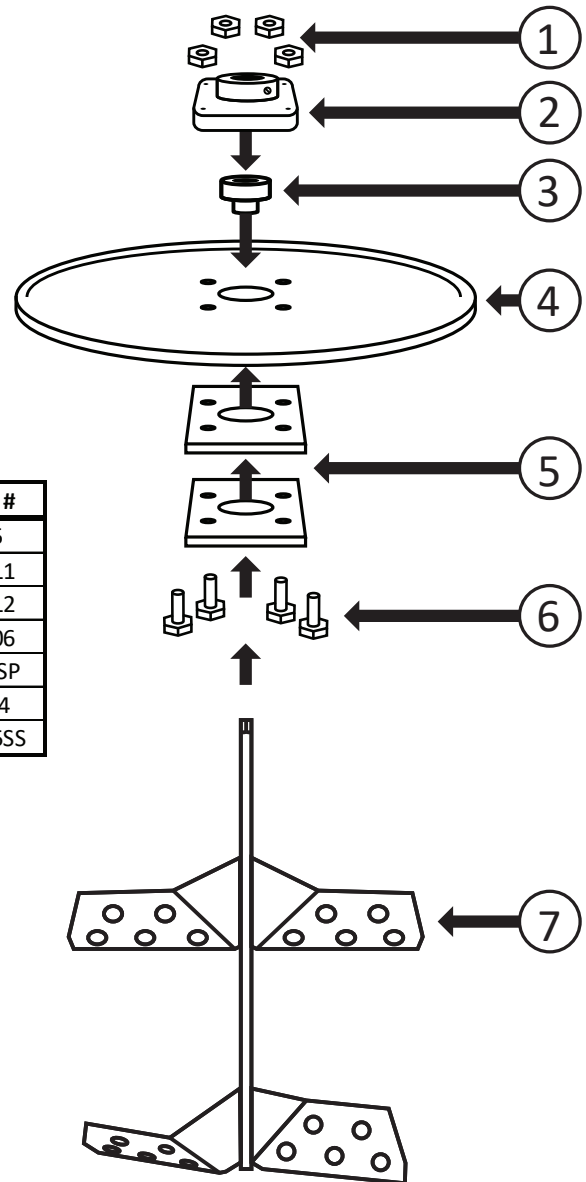
Ref.	Description	Part Number
1	6 Place Top Cover Guard	910402W
	3 Place Rear Guard (Not Shown)	910300W
2	Sprocket, Tensioner Primary	910114
3	6 Place Primary Drive Chain, No. 50	910050-G
	3 Place Primary Drive Chain, No. 50 (Not Shown)	910050-F
4	6" Tensioner Spring	910118
5	Safety Guard	910307W
6	Secondary Chain	910050-E
7	Idler Bolt	5361
8	Main Frame	910304X
9	Leg Assembly	910128
10	Side Guard	910054W
11	6 Place Bottom Guard	910400W
	3 Place Bottom Guard (Not Shown)	910106W
12	6 Place End Guard	910401W
	3 Place End Guard (Not Shown)	910111W
13	Front Guard	910302W
14	Sprocket, Drive Shaft	910016
15	Key, Drive Shaft	910000
16	Drive Shaft Bearing	910002
17	Drive Shaft 3/4"	910003-C
18	Lock Collar Drive Shaft	910001
19	Shear Pin 3/16"	910040C
20	Dolly Assembly (Wheels included)	910045
21	Live Skid (Drum Holder) (Wheels included)	910022
22	Wheel	910050
23	Motor Sprocket	910025
24	Chain Master link - #50 (Not Shown)	910049
25	Sprocket, Idler	910015
26	Ground Strap/Clamp	910073
27	Flexible Adjustable Driver	910069
Motor Options (Not Shown)		
	1 HP Explosion Proof Single Phase Motor 115/230 V	910077
	1 HP Explosion Proof Three Phase Motor 230/460 V	910078
	40:1 Gear Box	910153





55 Gallon Lid and Stainless Steel Paddle Assembly Dedoes PN# 910074SS

REF #	DESCRIPTION	PART #
1	3/8" - 16 KEP Nut (4)	5805
2	3/4" Flange Bearing (1)	910211
3	3/8" I.D. - 1" O.D. Oilite Bushing (1)	910012
4	55 Gallon Lid, Lid Ring, Bolt, & Nut Assembly (1)	910206
5	Stainless Steel Bushing Plate (2)	7045SSP
6	Stainless Steel Screw 3/8" -16 x 1 1/4" HXHD Grade 5 (4)	P0014
7	55 Gallon Stainless Steel Paddle (1)	910085SS



55 Gallon Paddle Installation Directions

- Measure the height of the drum in which the paddle is to be installed. The distance from the bottom of the paddle assembly to the underside of the cover should be 1 to 2 inches **less than** the height of the drum. Lock the paddle assembly at the proper height with the set screw in the flange bearing.
- Install the entire paddle and cover into the drum. Make sure the foam lid seal gasket is in place on the underside of the lid. Lock it to the drum with the locking lid ring included with the lid assembly #4.
- Rotate the paddle to make sure that the assembly is not binding on the bottom of the drum, bung,...etc. The drum is ready for placement under the mixer.



Machine Set-Up

It is very important that the mixing machine is properly set-up for operation. The unit must be level to allow for easy installation and removal of drums. The end frames must be in a straight upright position for proper stability. Sufficient room on both sides of the unit must be available for safe and easy drum handling.

1. Using proper hoisting equipment, place the machine in its operating location.
2. It is recommended that the two end frames be secured to the shop floor with $\frac{3}{8}$ " X $2\frac{1}{2}$ " Lag Bolts and Lead Anchors (not provided) through the holes in the end frames.
3. Position the unit where it will be permanently used and have a qualified electrician connect the motor to your starter switch and the electrical source. Refer to the wiring diagram on the motor nameplate. Note local codes for explosion-proof environments, if applicable.
4. After the drums are in place, position the flexible drivers and connect with a $\frac{3}{16}$ " X $1\frac{1}{4}$ " brass shear pin, Dedoes PN# 910040C. Replacing the shear pin with any other fastener will cause damage to the machine and void the warranty.
5. For your safety, make sure that the ground clamp is connected to both the machine and drum.

Safety Precautions

The mixing machine is a safe and easy to operate piece of equipment. However, as with all machinery, it is important for the operator to be alert at all times. Observe the following precautions:

1. Do not perform any maintenance while the machine is in operation.
2. Keep hands and loose clothing away from the chain area.
3. Always stop the machine and lock out power before removing the top or side guards.
4. Use care when moving drums.
5. Keep floor area clean to avoid slippery conditions.
6. Never operate the machine without the guards in place.

Shear Pin Protection

The flexible drivers are connected by a $\frac{3}{16}$ " X $1\frac{1}{4}$ " brass shear pin, Dedoes PN# 910040C. Abnormal amounts of stress from the drum mixing mechanism will snap the shear pin preventing strain or damage to the multi-head mixer. When it is necessary to replace a shear pin, a $\frac{3}{16}$ " X $1\frac{1}{4}$ " brass pin must be used. Viscosity of material must not exceed 2600 centipoise.

Lubrication and Maintenance

Gearbox: The gearbox is pre-filled with synthetic oil.

Pillow Block Bearings: The bearing units are factory pre-lubricated. A grease fitting is provided on each bearing for re-lubrication every 250 hours. Use a good grade multi-purpose grease.

Chain and Sprockets: Lightly grease the chain after each 30 days of operation with a quality non-liquefying lithium grease.

Visual Inspection

1. All sprockets, bushings, and shafts should be inspected every 30 days to prevent unusual wear patterns from developing.
2. Very important: Check all sprockets for horizontal alignment. All sprockets must be at the same height and must be horizontal.
3. All attaching hardware should be checked for tightness after the first 30 days of operation and every 90 days thereafter, or as necessary.

Operator Daily Inspection

The operator should make a quick daily inspection of the mixer to be certain everything is operating correctly. Make a visual inspection of the drive shafts to be sure they are all at the same level.

If at any time you notice unusual noise, wear, or poor operation of any kind, please notify your maintenance department. Early detection of problems can save down time and money.

Position the drum so that the flexible driver is directly in-line with the connection point of the drum and the drum mixer. This will allow the driver to operate freely without putting stress on the drive mechanism.