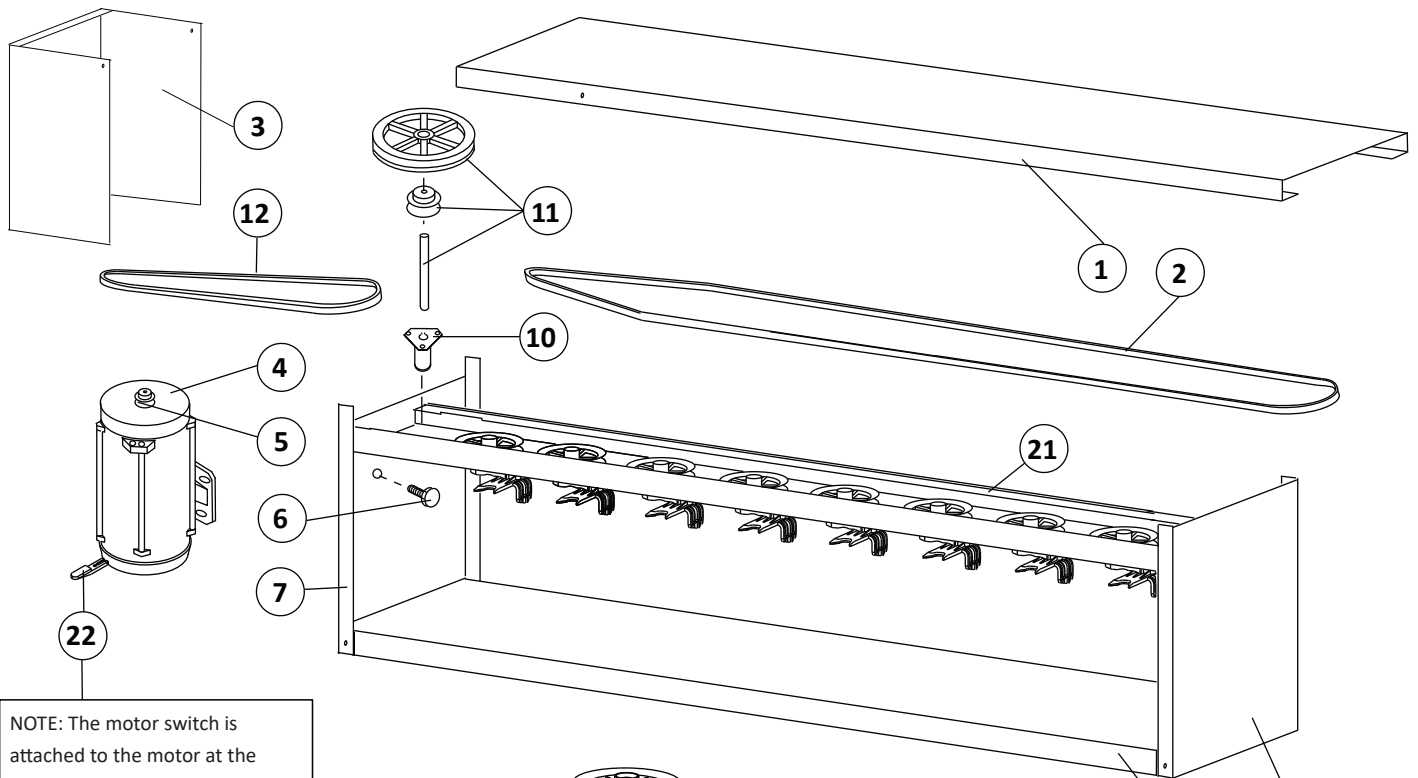


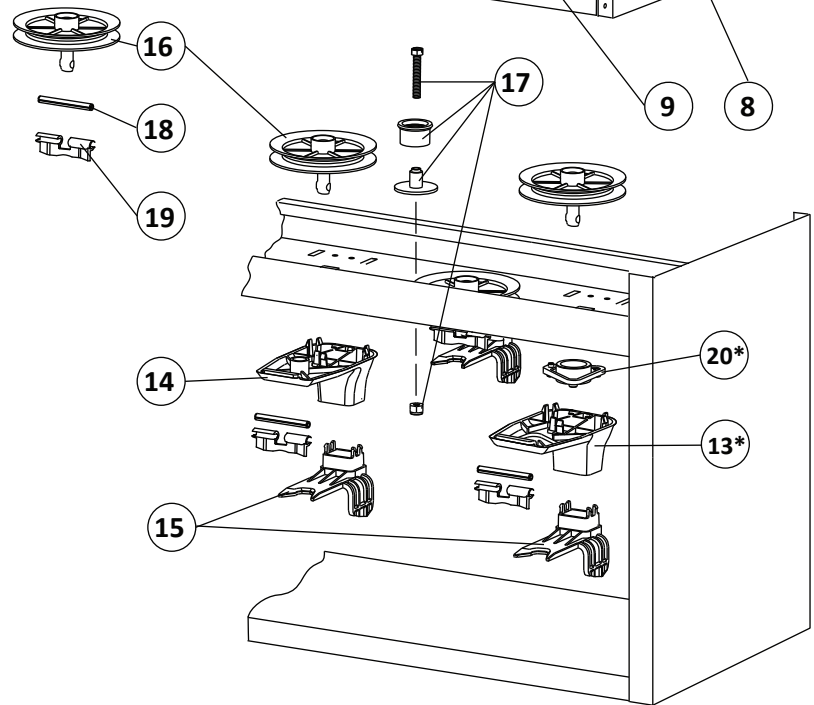


RJ Thrift-O-Matic 8 Place Machine Parts list & Breakdown

Part No: 008040



NOTE: The motor switch is attached to the motor at the factory. It is located under the left side of the motor guard.



REF.	DESCRIPTION	PART #
1	Top Cover	F600346
2	Powerhead V-Belt AX120 COG	5529
3	Motor Cover Guard	7035X
4	Motor 1/4 HP Explosion Proof	5308
5	Pulley 1- 1/2" x 1/2" A. Section	5019PLT
6	Thumb Screw	5097
7	Left Side Panel with Motor Mount	7037LX
8	Right Side Panel	7034RX
9	Base Shelf	7031U
10	Small Zinc Base Housing Assembly	5941
11	Reducer Pulley Assembly	5988M
12	Motor Belt 4L260	5129
13	Right End Station Bracket	5955
14	Powerhead Bracket	5957
15	Gallon Extension Bracket	5960
16	4 5/16" Pulley	5770
17	Idler Assembly	5655
18	Hinge Pin	P1827
19	Z-Shaped Driver Hinge	5772
20	Zinc Powerhead Bushing Assembly	5961-PB
21	Powerhead Shelf	4180U
22	On/Off Switch	5975

Thrift-O-Matic Powerhead Components

* Note: Items #13 and #20 are used in the very right mixing location ONLY. Item #14 is used in every other mixing location.



RJ Thrift-O-Matic 8 Place Set-Up Instructions & Maintenance

Part No: 008040

SAFETY PRECAUTIONS

This machine is intended for use by trained professionals in industrial work areas where public and incidental access is prohibited.

1. OSHA approved eye protection must be worn when operating all mixing equipment.
2. Safety gloves must be worn when handling steel because the galvanized edges may be sharp.
3. Keep hands and loose clothing away from moving parts.
4. Disconnect electrical power before performing any service on this machine.
5. Do not pick up the cans by the fork adapters.
6. Examine each can before placing them on the machine. The paddle must turn freely. Dented cans may result in premature wear, leakage, or spills.
7. All operators must read this manual to be aware of the proper use of the machine and all of its caution markings.

MACHINE SET UP

The Dedoes Eight Place Thrift-O-Matic Mixing System comes fully assembled and the required electrical hook up is ready for use. The system should be located on a level surface in a convenient, well lit area. The mixing equipment is assembled with lock nuts and bolts. However, it is important that all nuts and bolts are inspected before use as some may have become loose during transit.

ELECTRICAL INSTALLATION

There are two wires coming out of the motor which must be wired to the power supply by a certified electrician. Power supply and other electrical connections MUST conform to all federal, state, and local regulations and MUST be performed only by a fully qualified electrician.

All electrical connections MUST comply with local fire codes. Dedoes assumes no liability if improper wiring is not completed by a certified electrician. Dedoes RJ Thrift-O-Matic Machines are equipped with a 1/4 HP, Single Phase, 115V, 60 Hz., explosion proof, cULus (Class 1, Div. 1, Group D) motor. All motors come from the factory wired for 115V service.

IMPORTANT: CONDUIT FOR HAZARDOUS LOCATIONS MUST BE USED.

MACHINE BREAK IN

After the machine is completely installed and before placing the paint on it, run the system for approximately thirty minutes. Pay close attention to the machine during this time to be sure it is operating correctly. Afterward, check and adjust the belt tension if necessary. (See Maintenance for reference)

MAINTENANCE

Caution: Disconnect the electrical power before performing any service on the machine.

LUBRICATION: Lubricate the machine periodically. The zinc bushing have an oilite brass bushing. These may require lubrication more often. In either case, use a lubricant recommended by your paint manufacturer.

NOTE: When lubricating bushings, remove the paint from under the driver hinges and run the machine for a short period of time.

V-BELT ADJUSTMENT: (Reference #2 in part listing) Attention must be paid to the tension of the belt. Normal use will cause the belt to stretch. Adjustment slots for the powerhead belt are located at each idler. To adjust the belt, loosen the idler, and slide the idler closer to the center of the power head until the tension is correct. Then retighten the idler.

MOTOR BELT ADJUSTMENT: (Reference #12 in part listing) The Motor Belt is properly tensioned at factory standards. Optimal tension is achieved when the motor mount plate is parallel to the left side panel.

NOTE: Over tensioning the motor belt will cause damage to the belt if the motor mount is not parallel to the left side panel.

IMPORTANT: NEW BELTS SHOULD BE CHECKED AND ADJUSTED AFTER THE FIRST DAY OF OPERATION AS NECESSARY.

POWERHEAD BELT REPLACEMENT

1. Disconnect the electrical power to the machine.
2. Put on safety gloves. The metal edges may be sharp.
3. Swing the motor guard upward.
4. Remove the top shelf cover.
5. Remove the motor belt.
6. Loosen the idler assemblies.
7. Remove the old powerhead belt.
8. Starting with the drive pulleys on the left side, position the new belt around each of the pulleys and idler assemblies. NOTE: The idlers must be on the outside of the belt.
9. Set the idlers in the slots to the correct belt tension. Tighten the idlers evenly to assure even back bend on each idler.
10. Re- install the motor belt.
11. Re-install the top shelf cover and lower the motor guard.

PRODUCT WARRANTY POLICY

Dedoes Industries warrants the Dedoes Thrift-O-Matic Machine against defects due to defective material, design or manufacturing to the end user for a period of two years.

This warranty covers all manufactured parts on the products that are defective or damaged. All products, goods, services and equipment comply with all applicable environmental, safety, design, and regulatory laws, regulations, customs, and requirements of the region in which they are delivered and put into service.

This warranty does not cover any items that have been damaged due to mutilation, alteration, misuse, or abuse. Corrosion due to neglect or chemicals is not covered by this warranty. Dedoes will not be responsible for loss of time, inconvenience, or other consequential damages. Dedoes assumes no liability if proper wiring is not completed by a certified electrician.

The warranty is void:

- if the equipment is not properly wired to all applicable codes by a certified electrician
- if the equipment is not installed, assembled, or aligned properly
- if Dedoes parts are not used for repairs or installation

This is the only warranty on Dedoes products and no other expressed warranty by anyone other than Dedoes, in writing, will be binding on the manufacturer. This warranty is transferable from the location of the original installation of the equipment to any additional installation locations within the warranty time period.

Warranty Return Policy: Under no circumstance should the product or any part there-of be returned to Dedoes for inspection, replacement, and/or repair without the written consent from Dedoes Industries. Returned items must be in original unused condition, unless there is a manufacturer defect. Please contact Dedoes at 1-248-624-7710 to obtain a Returned Goods Authorization Number and to discuss other specifics of the return.

**PLEASE NOTE: This machine is designed to run a
MAXIMUM of TWO HOURS per day or
1/2 Hour continuously. Premature wear or
premature damage of the machine will occur if
the machine runs longer than the maximum limit
and will void the warranty.**