



# Air Amplifier Stand Parts Breakdown and Parts List

**Complete Air Amplifier Stand with Two Quest Air Amplifiers - DEDOES P# SA0101-HF**

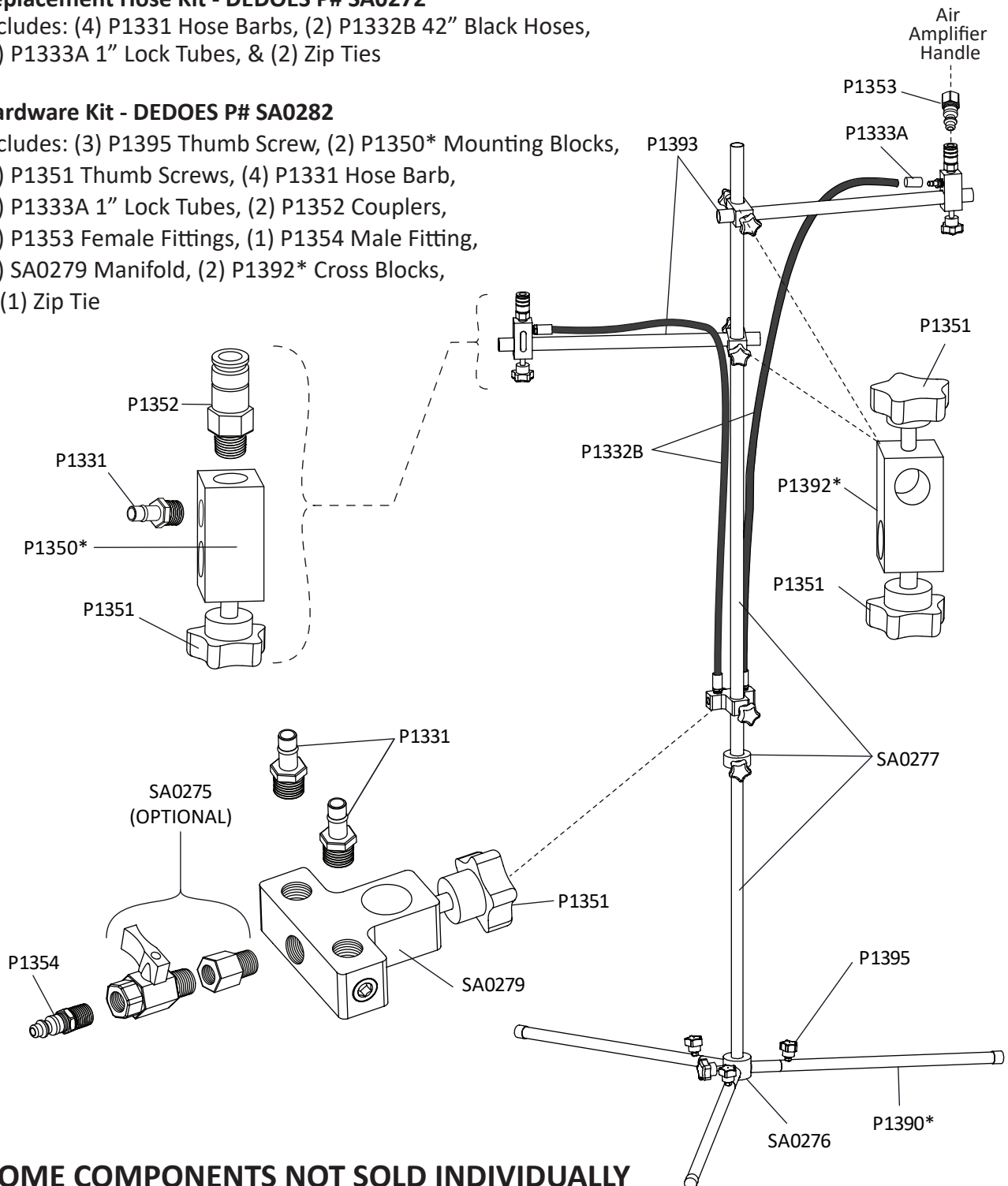
**Complete Air Amplifier Stand Only - DEDOES P# AMP01-SHF**

**Replacement Hose Kit - DEDOES P# SA0272**

Includes: (4) P1331 Hose Barbs, (2) P1332B 42" Black Hoses, (4) P1333A 1" Lock Tubes, & (2) Zip Ties

**Hardware Kit - DEDOES P# SA0282**

Includes: (3) P1395 Thumb Screw, (2) P1350\* Mounting Blocks, (6) P1351 Thumb Screws, (4) P1331 Hose Barb, (4) P1333A 1" Lock Tubes, (2) P1352 Couplers, (2) P1353 Female Fittings, (1) P1354 Male Fitting, (1) SA0279 Manifold, (2) P1392\* Cross Blocks, & (1) Zip Tie



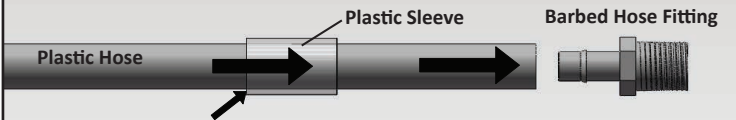
**\*SOME COMPONENTS NOT SOLD INDIVIDUALLY**



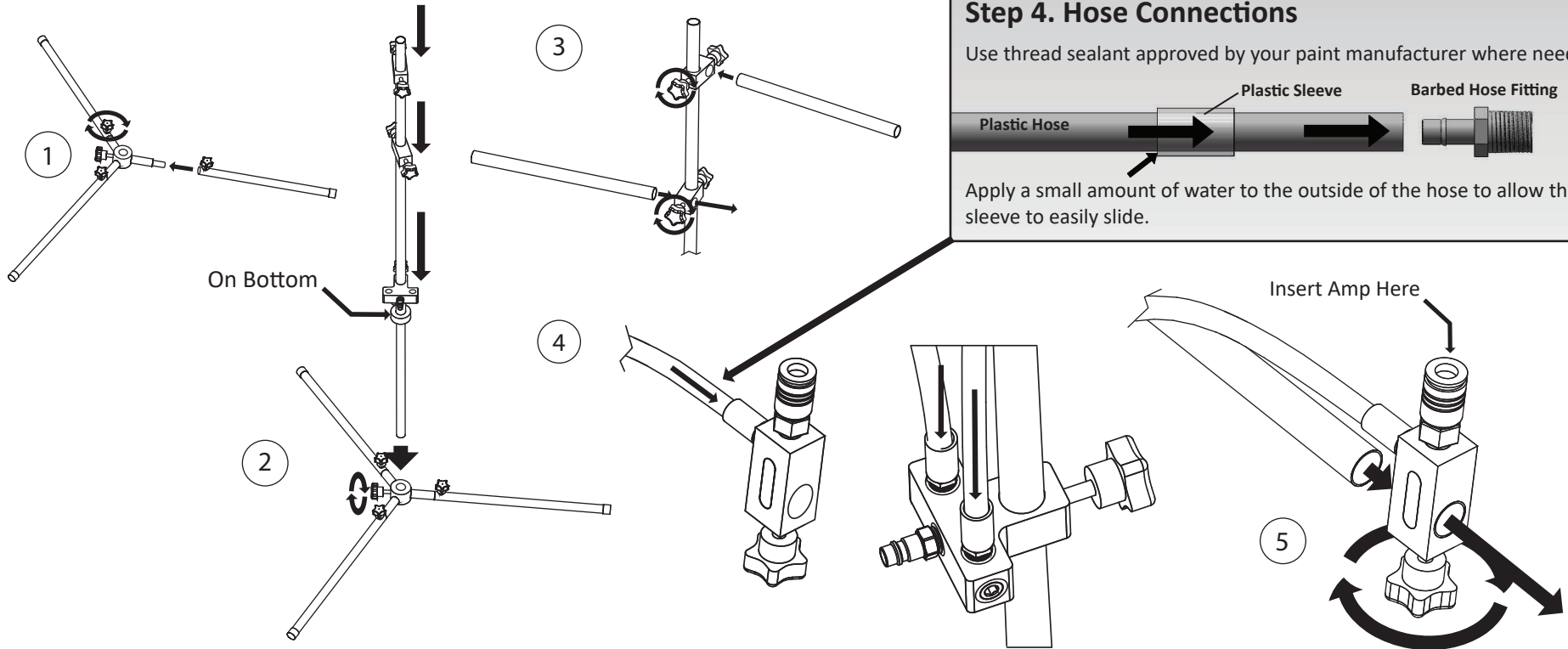
# Quest Air Amplifier Stand Assembly

## Step 4. Hose Connections

Use thread sealant approved by your paint manufacturer where needed.



Apply a small amount of water to the outside of the hose to allow the sleeve to easily slide.



Step 1: Assemble the three feet onto the base hub.

Step 2: Mount the vertical tube. Take care to place the ring with the locking screw downwards towards the bottom. Install the five port manifold over the vertical tube first then install the two aluminum blocks for holding the horizontal tubes.

Step 3: Install the horizontal tubes.

Step 4: Assemble the male hose inlet fitting to the side of the five-port aluminum air manifold. Then assemble the two barbed hose fittings on This same manifold. On the two air gun manifolds, install one barbed hose fitting on the long side of this manifold and install the universal quick coupler on the short side of this manifold (top). Repeat the process for the second gun manifold. Use approved thread sealant on the threads of the fittings approved by your paint manufacturer. Ensure that the white plastic locking sleeve is installed on both ends of the black plastic tubing about four inches back from the ends of the tubing. Repeat this process for all of the other plastic tubing. Next, push the black plastic tubing over the barbed hose fittings on the five-port manifold and then to each of the air gun manifolds. Ensure that the black plastic tubing is pushed up to the end of the hex on the barbed fittings. Finally, secure the tubing with the white plastic locking sleeve by pushing it up and over each of the barbed hose fittings.

Step 5: Place the two gun support manifolds on the horizontal bars. Apply the cable tie near the Inlet Air Manifold.